

FLAME DETECTOR IR2 EXD ATEX

AE/FL-IR2EX

Description

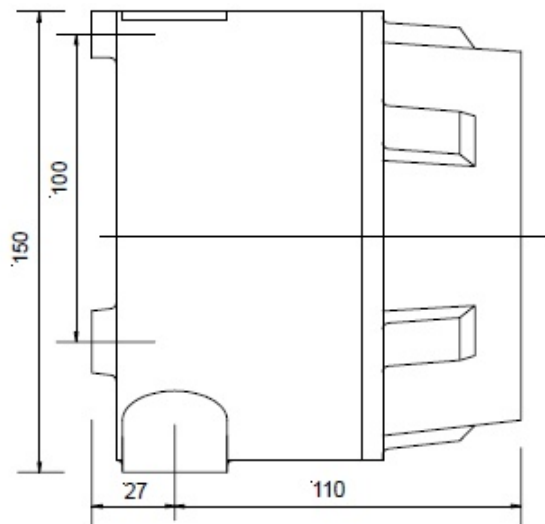
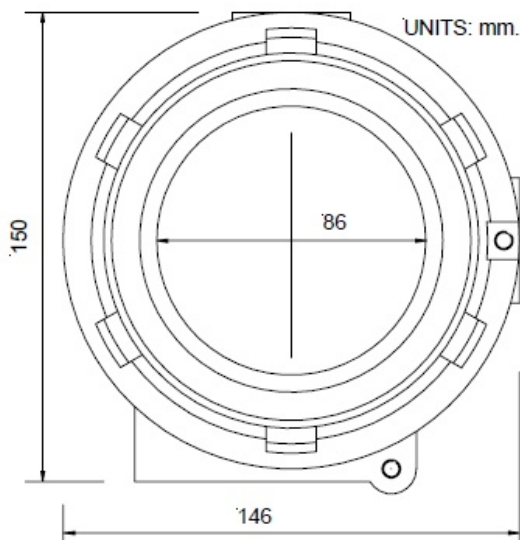
Dual infrared flame detector, mounted in flameproof housing.
 Its microprocessor allows it to work with different levels of flame intensity and to operate normally under adverse conditions.

Adjustable detector sensitivity in accordance with EN54-10 standard.

- Dual technology infrared detector
- Special for working in difficult conditions
- IP66 housing
- Flameproof housing
- Low current consumption
- Current loop and contact outputs
- Works with or without interlocking
- Adjustable sensitivity
- Tolerates dirty environments
- Self-test utility
- Microprocessor controlled
- Immune to false alarms (sparks, flashes, etc)
- According to EN54-10



Dimensions



TECHNICAL CHARACTERISTICS

Supply voltage:	14 - 30 VDC
Supplied current:	3/9, 4/8/14, 4-20, 8-20 mA
Field of view:	90 ° min. conical
Spectral Response (IR):	1 to 2.7 microm
Operating temperature:	-10 ° C to 55 ° C
Storage temperature:	-20 ° C to 65 ° C
Relative humidity:	95% without condensation
Protection range:	IP66
Weight:	2.5 kg

CERTIFICATIONS

Marking IEC EEx d IIC T6